



Centers for American Indian and Alaska Native Health

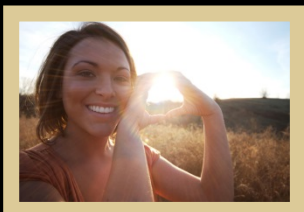
COLORADO SCHOOL OF PUBLIC HEALTH

UNIVERSITY OF COLORADO
ANSCHUTZ MEDICAL CAMPUS



Presentation Emphases:

- ◆ Four promising lines of inquiry for building our knowledge base and applying that knowledge to improve the health and welfare of American Indian and Alaska Native youth:
 - Preventing childhood obesity and reducing the risk of immediate as well as long-term effects on health and well-being
 - Recognizing the nature and extent of adverse childhood experiences, preventing resultant trauma, and ameliorating consequences such as depression, substance abuse, and suicide
 - Improving oral health by preventing early childhood dental caries and providing resources that increase self, parental, organizational, and community care
 - Promoting positive youth development by enhancing their interests, skills, and abilities through programs that optimize developmental progress
- ◆ These lines of inquiry are of high priority in Native communities, among sponsors, and across the developmental life course
- ◆ Successful intervention is possible, with promising examples evident throughout tribal Nations
- ◆ Common elements of these interventions:
 - Community readiness – recognizing need, mobilizing key stakeholders, providing necessary resources, and sustaining attention
 - Defeating the “silo” mentality by seeking synergies, braiding funding streams, leveraging resources
 - Encouraging innovation and creativity in approaches through tribal and private, philanthropic investments, particularly those rooted in cultural traditions
 - Promoting data-informed assessments of progress and impacts; integrating continuous quality improvement into implementation processes
 - Ongoing, sustained inclusion of key stakeholders – youth, families, elders, providers, leaders, sponsors – in the development, implementation, and dissemination
- ◆ Build local capacity to design, innovate, implement, evaluate, and translate individual, family, organizational, and community level change for broad-based benefit
- ◆ Enable peer-to-peer learning structures: stakeholders’ voices matter!
- ◆ Engender trust, discussion skills, leadership, and accountability
- ◆ Bring sustained purpose to social enterprise that encourages collective leadership and nurtures a collaborative culture



White House Convening on Creating Opportunities for Native Youth

April 8, 2015

Research Panel

Spero M. Manson, Ph.D.