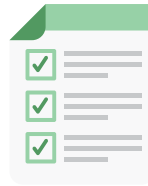


HOW TO USE THIS FRAMEWORK:



District leaders should use their available data to **identify gaps** in student access and outcomes.



Based on the district's data, leaders should **set their priorities** in order to determine how to **apply ESSA** as a support.



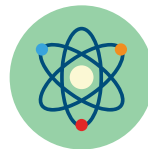
District leaders should then use the relevant briefs to **support district strategy**.



This framework considers eight issues that are often already priorities in many districts and **identifies ESSA provisions** that could be purposed to address each issue:



Leveraging school improvement to advance equity



Increasing access to advanced coursework



Ensuring equitable funding



Addressing disproportionate discipline practices



Increasing access to effective teachers and leaders



Integrating social, emotional, and academic development



Supporting English learners



Improving access to high-quality instructional materials